

REEVES Junior & Senior Pulleys

REEVES Vari-speed motor pulleys and accessories provide economical, trouble-free adjustable speed drives for the fractional thru 15 HP range. Easy application and rugged design have made these drives a favorite machinery design option for many years. Extra-Value (XV) features reduce maintenance time and costs, and contribute to longer belt life and quieter operation.

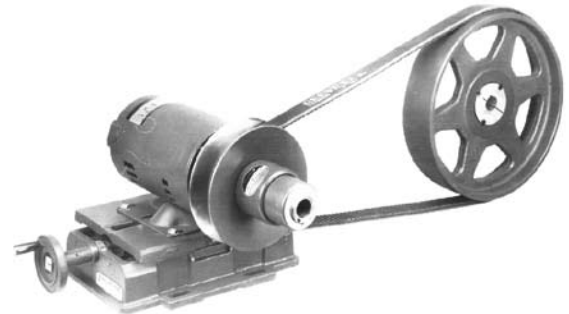
Junior Pulley – Only one moving part makes REEVES Jr. Pulleys extra reliable and easy to maintain.

- ¼ to 1-½ HP
- 2.75:1 Speed Range
- Easily Lubricated: Contaminants flushed from sliding surfaces
- Patented closed groove lube system with grease reserve
- Uses standard A or B section belts
- Driven sheave options include FHP or Dual-Duty Taper-Lock sheaves
- Fast, simple set screw mounting



Senior Pulley – Easy to apply, easy to install and easy to maintain.

- ¼ to 15 HP
- 3:1 Speed Range
- Uses industry standard wide range belts
- Stock Taper-lock flat face pulley is driven sheave
- Self-contained spring cartridge for safety
- XV Features on ¼ HP – 10HP models
- Sliding disc rides on tough engineered **Elastomeric Bushing**: Eliminates the need for lubrication; Will not corrode or stick; quick, easy replacement
- **Clamp Collar Mounting** (Collet-style hub secured by compression clamp) for superior shaft grip, concentric mount keeps wear and vibration to a minimum and no fretting corrosion means easy removal for maintenance
- **Ductile Iron Discs** that are naturally balanced because they are machined all over means smooth running, also stronger and more wear resistant than cast iron or steel.



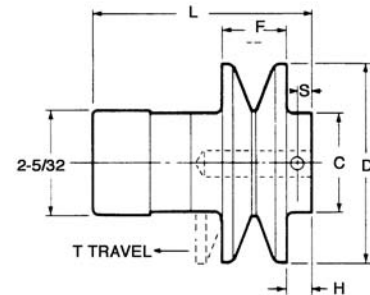
REEVES Junior & Senior Pulleys

Junior Pulley Ratings & Specifications:

Size	Speed Range	HP @ RPM			Pitch Dia		Dimensions						
		1750	1450	1160	Min	Max	D	F	L	T	C	H	S
830	1.75:1	1/4, 1/3	1/8, 1/4	1/8, 1/4	1.94	3.38	3.38	0.78	3.69	0.34	1.38	0.13	0.22
850	2.25:1	1/2	1/3	1/3	2.11	4.75	5.13	0.94	4.97	0.88	1.88	0.68	0.25
860	2.75:1	3/4	1/2	1/2	2.09	5.75	6.16	0.94	5.87	1.19	1.88	0.84	0.25
870	2.5:1	1	3/4	3/4	2.65	6.63	7.16	1.25	6.88	1.28	2.13	0.75	0.25
875	2.5:1	1-1/2	1	1	2.85	7.13	7.66	1.28	7.09	1.38	2.13	0.94	0.25

Junior Pulley Selection:

Size	Part Number by Bore Size				
	1/2	5/8	3/4	7/8	1
830	H95000	H95001	H95002	---	---
850	H95003	H95004	H95005	---	---
860	H95006	H95007	H95008	---	---
870	---	H95009	H95010	H95011	H95012
875	---	H95214	H95013	H95014	H95015

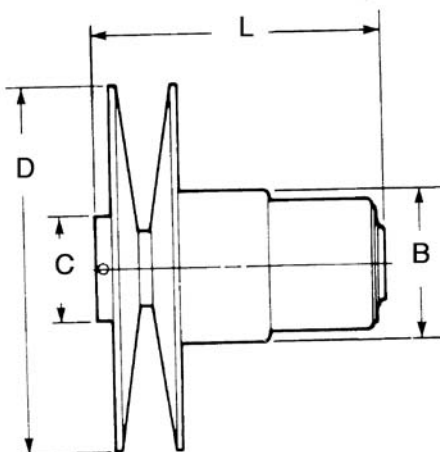


Senior Pulley Ratings & Specifications:

Size	Speed Range	HP @ RPM			Belt Width	Pitch Dia		Dimensions			
		1750	1450	1160		Min	Max	D	L	B	C
5675	3:1	1/4, 1/2, 3/4	1/4, 1/2	1/4, 1/2	7/8	1.73	5.19	5.44	5.12	2.44	1.75
7202	3:1	1, 1-1/2, 2	1, 1-1/2	1, 1-1/2	1-3/16	2.25	7.01	7.01	6.04	3.13	2.13
9205	3:1	3, 5	2, 3	1-1/2, 2, 3	1-13/16	2.90	8.71	8.96	7.75	3.69	2.75
1110	3:1	7-1/2, 10	5, 7-1/2	5, 7-1/2	2-3/4	3.61	10.84	11.09	10.08	5.00	3.00
912-15	2:1	15	10	10	2-3/4	5.88	11.75	12.00	11.31	4.72	---

Senior Pulley Selection:

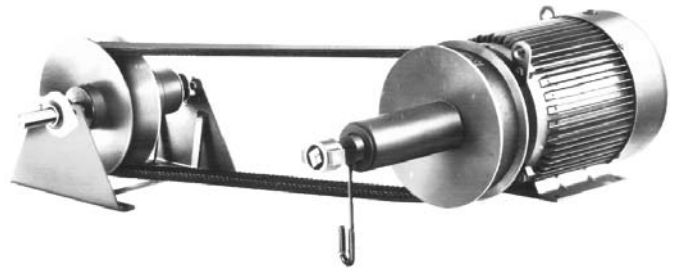
Size	Part Number by Bore Size								
	1/2	5/8	3/4	7/8	1	1-1/8	1-1/4	1-3/8	1-5/8
5675	H95500	H95501	H95502	---	---	---	---	---	---
7202	---	H95503	H95504	H95505	H95506	---	---	---	---
9205	---	---	---	H95507	H95508	H95509	---	H95510	---
1110	---	---	---	---	---	H95511	H95512	H95513	H95514
912-15	---	---	---	---	---	---	---	H95619	H95042



REEVES Compound Pulleys

Compound Pulley – For constant center distance applications where both motor and driven load must remain immovable.

- ¼ to 5 HP
- 9:1 speed range
- Available countershaft allows C-Flow or Z-Flow configurations
- Manual control of motor pulley for accurate, smooth speed adjustment
- Adjustable motor base not required

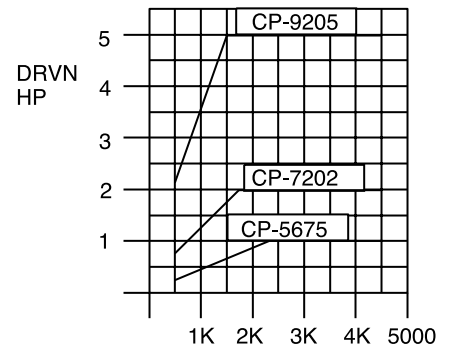


Compound Pulley Ratings & Specifications:

Size		Speed Range*		HP @ RPM			Dimensions						
Driver	Driven	1750 RPM Mtr	1160 RPM Mtr	1750	1450	1160		C	D	F1	F2	L	W
CP-5675	5675			3/4	1/2	1/2	Driver	1.75	5.44	1.11	1.81	9.84	3.88
							Driven						
CP-7202	7202	4500/580	3480/387	2	1-1/2	1	Driver	2.19	7.01	1.46	2.41	10.78	3.69
							Driven						
CP-9205	9205			5	3	3	Driver	2.75	8.96	2.11	3.34	12.50	3.75
							Driven						

*Constant Torque

OUTPUT HORSEPOWER



Compound Pulley Selection:

Size	Part Number by Bore Size*						
	1/2	5/8	3/4	7/8	1	1-1/8	1-3/8
CP-5675	H95518	H95519	H95520	---	---	---	---
CP-7202	---	H95521	H95522	H95523	H95524	---	---
CP-9205	---	---	---	H95525	H95526	H95527	H95528

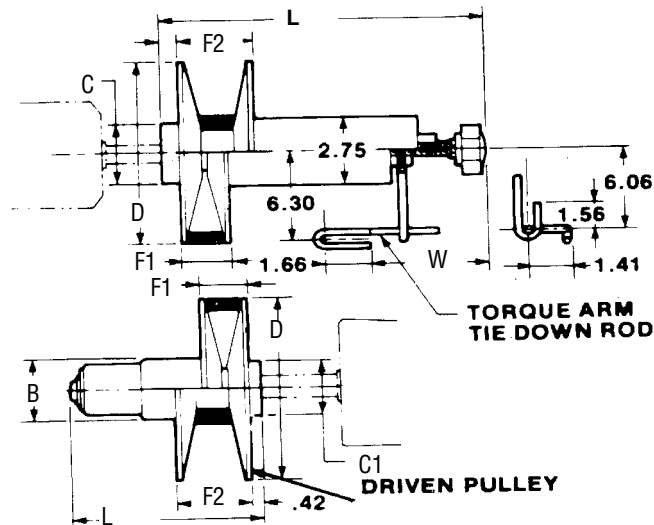
*Part number is for Driver pulley only. See Sr. Pulley chart for driven pulley part number.

Thru-Bore Driven Pulleys:

Thru-Bore pulleys are the same as the standard 5675, 7202, and 9205 pulleys, except the bore is extended through the hub. This enables the pulley to be mounted on the REEVES countershaft.

Thru-Bore Pulley Selection:

Size	Bore	Part No.	Weight (lbs)
5675	3/4	H95515	6
7202	1	H95516	10
9205	1	H95517	14



APG

MASTER XL

MOTO DRIVE

ULTIMA

REEVES PULLEYS

REEVES Compound Pulleys

REEVES Compound Pulley

Belt/Center-Distance Selection

CP-5675/5675 Pulley Combo		CP-7202/7202 Pulley Combo		CP-7202/7202 Pulley Combo	
Belt P/N	Center Distance	Belt P/N	Center Distance	Belt P/N	Center Distance
109409	9.07	109498	8.50	109715	14.38
109011	12.35	109051	10.53	109717	16.38
109012	15.37	109020	11.59	109719	17.40
109013	18.39	109021	13.58	109720	18.41
109014	21.40	109508	15.10	109721	19.42
109422	24.40	109022	16.22	109722	20.43
		109023	19.64	109724	22.45
		109024	22.66	109726	24.47
		109516	25.68	109728	26.48
		109520	28.69	109729	29.01
		109523	32.70	109732	33.02
				109734	35.53

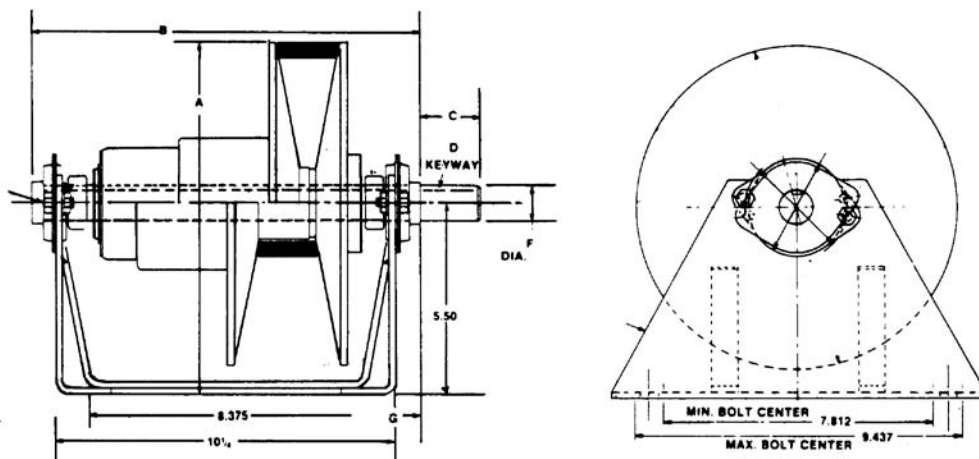
Vari-Speed Countershaft:

The REEVES Vari-Speed Countershaft is designed to accept REEVES Pulley sizes 5675, 7202, and 9205 in motion control applications with compound pulleys CP-5675, CP-7202, and CP-9205. Easy to remove shaft bearings on both ends provide convenient change over for left or right hand output. To obtain C-Flow or Z-Flow configurations, only the shaft is moved.

Vari-Speed Countershaft Specifications & Selection:

Part No	Description	Used with Pulley	Dimensions				
			A*	B	C	D	F
H95377	CS1 x 3/4	5675	8.283	11.77	2.125	3/16 x 3/32	0.75
H95430	CS2 x 1	7202, 9205	9.06		2.875	1/4 x 1/8	1.00

*10.023" for 9205 Pulley.



REEVES Junior & Senior Pulleys

REEVES Junior Pulley

Size 830 Junior Pulley

¼ to 1/3 HP @ 1750 RPM
 Driven Sheave: FHP or Dual-Duty
 Belt: 4L FHP, A or AX S-L Classic

Driven RPM's Max/Min		Driven Sheave P.D.	Min/Max Center Distance for V-Belt No.												
Motor RPM			A-26	A-31	A-33	A-35	A-38	A-42	A-46	A-48	A-51	A-53	A-55	A-60	A-71
1750	1160														
1965	1305	3.0	8.6	11.1	12.1	13.1	14.6	16.6	18.6	19.6	21.1	22.1	23.1	25.6	31.1
1125	750		9.8	12.3	13.3	14.3	15.7	17.7	19.7	20.7	22.2	23.2	24.2	26.7	32.2
1850	1225	3.2	8.5	11.0	12.0	13.0	14.5	16.5	18.5	19.5	21.0	22.0	23.0	25.5	31.3
1060	700		9.6	12.1	13.1	14.1	15.1	17.6	19.6	20.6	22.1	23.1	24.1	26.6	32.4
1740	1150	3.4	8.3	10.8	11.8	12.8	14.3	16.3	18.3	19.3	20.8	21.8	22.8	25.3	30.8
990	660		9.4	11.9	12.9	13.9	15.4	17.4	19.4	20.4	21.9	22.9	23.9	26.4	31.9
1640	1085	3.6	8.2	10.7	11.7	12.7	14.2	16.2	18.2	19.2	20.7	21.7	22.7	25.2	30.7
940	620		9.3	11.8	12.8	13.8	15.3	17.3	19.3	20.3	21.8	22.8	23.8	26.3	31.8
1555	1030	3.8	8.0	10.5	11.5	12.5	14.0	16.0	18.0	19.0	20.5	21.5	22.5	25.0	30.5
890	590		9.1	11.6	12.6	13.6	15.1	17.1	19.1	20.1	21.6	22.6	23.6	26.1	31.6
1480	980	4.0	7.8	10.3	11.3	12.3	13.8	15.8	17.8	18.8	20.3	21.3	22.3	24.8	30.3
845	560		8.9	11.4	12.4	13.4	14.9	16.9	18.9	19.9	21.4	22.4	23.4	25.9	31.4
1410	930	4.2	7.7	10.2	11.2	12.2	13.7	15.7	17.7	18.7	20.2	21.2	22.2	24.7	30.2
810	530		8.8	11.3	12.3	13.3	14.8	16.8	18.8	19.8	21.3	22.3	23.3	25.8	31.3
1340	890	4.4	7.5	10.0	11.0	12.0	13.5	15.5	17.5	18.5	20.0	21.0	22.0	24.5	30.1
770	510		8.6	11.1	12.1	13.1	14.6	16.6	18.6	19.6	21.1	22.1	23.1	25.6	31.2
1285	850	4.6	7.4	9.9	10.9	11.9	13.4	15.4	17.4	18.4	19.9	20.9	21.9	24.4	29.9
735	490		8.4	10.9	11.9	12.9	14.4	16.4	18.4	19.4	20.9	21.9	22.9	25.4	31.0
1230	815	4.8	7.2	9.7	10.7	11.7	13.2	15.2	17.2	18.2	19.7	20.7	21.7	24.2	29.7
700	465		8.2	10.7	11.7	12.7	14.2	16.2	18.2	19.2	20.7	21.7	22.7	25.2	30.8
1180	785	5.0	7.0	9.5	10.5	11.5	13.0	15.0	17.0	18.0	19.5	20.5	21.5	24.0	29.5
680	450		8.1	10.6	11.6	12.6	14.1	16.1	18.1	19.1	20.6	21.6	22.6	25.1	30.6
1135	750	5.2	6.9	9.4	10.4	11.4	12.9	14.9	16.9	17.9	19.4	20.4	21.4	23.9	29.4
650	430		7.9	10.4	11.4	12.4	13.9	15.9	17.9	18.9	20.4	21.4	22.4	24.9	30.5
1095	725	5.4	6.7	9.2	10.2	11.2	12.7	14.7	16.7	17.7	19.2	20.2	21.2	23.7	29.2
625	415		7.7	10.2	11.2	12.2	13.7	15.7	17.7	18.8	20.3	21.3	22.3	24.8	30.3
1055	700	5.6	6.5	9.0	10.0	11.0	12.5	14.5	16.5	17.5	19.0	20.0	21.1	23.6	29.1
600	400		7.5	10.0	11.0	12.0	13.5	15.6	17.6	18.6	20.1	21.1	22.1	24.6	30.2
1020	675	5.8	6.3	8.8	9.8	10.9	12.4	14.4	16.4	17.4	18.9	19.9	20.9	23.4	28.9
580	385		7.3	9.8	10.9	11.9	13.4	15.4	17.4	18.4	19.9	20.9	21.9	24.4	30.0
985	655	6.0	6.1	8.7	9.7	10.7	12.2	14.2	16.2	17.2	18.7	19.7	20.7	23.2	28.7
560	375		7.1	9.7	10.7	11.7	13.2	15.2	17.2	18.2	19.7	20.7	21.8	24.3	29.8
955	630	6.2	6.0	8.5	9.5	10.5	12.0	14.1	16.1	17.1	18.6	19.6	20.6	23.1	28.6
545	360		6.9	9.5	10.5	11.5	13.0	15.1	17.1	18.1	19.6	20.6	21.6	24.1	29.7
920	610	6.4	5.8	8.3	9.3	10.4	11.9	13.9	15.9	16.8	18.4	19.4	20.4	22.9	28.4
530	350		6.7	9.3	10.4	11.4	12.9	14.9	16.9	17.9	19.4	20.4	21.4	24.0	29.5
845	560	7.0	---	7.8	8.8	9.8	11.4	13.4	15.4	16.4	17.9	18.9	19.9	22.4	27.9
485	320		---	8.8	9.8	10.8	12.4	14.4	16.4	17.4	18.9	19.9	20.9	23.4	29.0
720	480	8.2	---	6.6	7.7	8.7	10.3	12.3	14.4	15.4	16.9	17.9	18.9	21.4	26.9
415	275		---	7.5	8.6	9.7	11.2	13.3	15.4	16.4	17.9	18.9	19.9	22.3	28.0
655	435	9.0	---	---	6.9	7.9	9.5	11.6	13.6	14.6	16.2	17.2	18.2	20.7	26.3
375	245		---	---	7.8	8.9	10.5	12.5	14.6	15.6	17.2	18.2	19.2	21.7	27.3
560	370	10.6	---	---	---	---	7.8	10.0	12.1	13.2	14.7	15.7	16.8	19.3	24.9
315	210		---	---	---	---	8.7	10.9	13.1	14.1	15.7	16.7	17.8	20.3	25.9
495	325	12.0	---	---	---	---	---	8.5	10.7	11.7	13.4	14.4	15.5	18.0	23.7
280	185		---	---	---	---	---	9.4	11.6	12.7	14.3	15.4	16.4	19.0	24.7

APG

MASTER XL

MOTO DRIVE

ULTIMA

REEVES PULLEYS

REEVES Junior & Senior Pulleys

Size 850 Junior Pulley

½ HP @ 1750 RPM
 Driven Sheave: FHP or Dual-Duty
 Belt: 4L FHP, A or AX S-L Classic

Driven RPM's Max/Min Motor RPM		Driven Sheave P.D.	Min/Max Center Distance for V-Belt No.												
1750	1160		A-26	A-31	A-33	A-35	A-38	A-42	A-46	A-48	A-51	A-53	A-55	A-60	A-71
1640	1100	5.0	6.0	8.5	9.5	10.5	2.0	14.0	16.0	17.0	18.5	19.5	20.5	23.0	28.5
740	490		8.1	10.6	11.6	12.6	14.1	16.1	18.1	19.1	20.6	21.6	22.6	25.1	30.6
1560	1060	5.2	---	8.3	9.3	10.3	11.8	13.8	15.8	16.8	18.3	19.3	20.3	22.8	28.3
710	470		10.4	11.4	12.4	13.9	15.9	17.9	18.9	20.4	21.4	22.4	24.9	30.1	
1540	1020	5.4	---	8.2	9.2	10.2	11.7	13.7	15.7	16.7	18.2	19.2	20.2	22.7	28.1
685	455		10.2	11.2	12.2	13.7	15.7	17.7	18.7	20.2	21.2	22.2	24.7	30.3	
1485	985	5.6	---	8.0	9.0	10.0	11.5	13.5	15.5	16.5	18.0	19.0	20.0	22.5	28.0
638	440		9.9	10.9	11.9	13.4	15.4	17.4	18.4	19.9	20.9	21.9	24.4	30.0	
1385	985	5.8	---	7.8	8.8	9.8	11.3	13.3	15.3	16.3	17.8	18.8	19.8	22.3	27.6
620	420		9.8	10.8	11.8	13.3	15.3	17.3	18.3	19.8	20.8	21.8	24.3	29.4	
1385	920	6.0	---	7.7	8.7	9.7	11.2	13.2	15.2	16.2	17.7	18.7	19.7	22.2	27.2
620	410		9.6	10.6	11.6	13.1	15.1	17.1	18.1	19.6	20.6	21.6	24.2	29.2	
1340	890	6.2	---	7.5	8.5	9.5	11.0	13.0	15.0	16.0	17.5	18.5	19.5	22.0	27.2
595	400		9.4	10.4	11.4	12.9	14.9	16.9	17.9	19.4	20.4	21.4	23.9	29.1	
1300	860	6.4	---	7.4	8.4	9.4	10.9	12.9	14.9	15.9	17.4	18.4	19.4	21.9	27.3
580	385		9.2	10.2	11.2	12.7	14.7	16.7	17.7	19.2	20.2	21.2	23.7	29.2	
1190	785	7.0	---	6.9	7.9	8.9	10.3	12.3	14.3	15.3	16.8	17.8	18.8	21.3	26.9
530	350		8.6	9.6	10.6	12.2	14.2	16.2	17.2	18.8	19.8	20.8	23.1	28.7	
1015	670	8.2	---	---	---	7.8	9.3	11.3	13.3	14.3	15.9	16.9	17.9	20.3	25.9
450	300		---	---	---	9.6	11.2	13.2	15.2	16.2	17.7	18.7	19.7	22.1	27.7
920	615	9.0	---	---	---	---	8.6	10.6	12.6	13.6	15.2	16.2	17.2	19.8	25.2
410	275		---	---	---	---	10.3	12.3	14.3	15.3	17.1	18.1	19.7	21.3	27.0
785	520	10.6	---	---	---	---	---	9.1	11.2	12.2	13.8	14.8	15.8	18.3	23.9
350	230		---	---	---	---	---	10.8	12.9	14.0	15.6	16.6	17.6	20.2	21.7
690	460	12.0	---	---	---	---	---	---	9.8	10.9	12.5	13.5	14.5	17.1	24.7
310	205		---	---	---	---	---	---	11.5	12.6	14.2	15.2	16.2	18.8	26.5
555	370	15.0	---	---	---	---	---	---	---	---	---	---	11.5	14.2	20.0
245	165		---	---	---	---	---	---	---	---	---	---	13.1	15.9	21.7

APG

MASTER XL

MOTO DRIVE

ULTIMA

REEVES PULLEYS

REEVES Junior & Senior Pulleys

Size 860 Junior Pulley

¾ HP @ 1750 RPM
 Driven Sheave: FHP or Dual-Duty
 Belt: 4L FHP, A or AX S-L Classic

Driven RPM's Max/Min		Driven Sheave P.D.	Min/Max Center Distance for V-Belt No.											
Motor RPM			A-31	A-33	A-35	A-38	A-42	A-46	A-48	A-51	A-53	A-55	A-60	A-71
1750	1160													
1675	1110	6.0	6.9	7.9	8.9	10.4	12.4	14.4	15.4	16.9	17.9	18.9	21.4	26.5
610	405		9.6	10.6	11.6	13.1	15.1	17.1	18.1	19.7	20.7	21.7	24.2	29.3
1620	1075	6.2	6.7	7.7	8.7	10.2	12.2	14.2	15.2	16.7	17.7	18.7	21.2	25.6
590	390		9.4	10.4	11.4	12.9	14.9	17.0	18.0	19.5	20.5	21.5	24.0	28.7
1570	1040	6.4	---	7.6	8.6	10.1	12.1	14.1	15.1	16.6	17.6	18.6	21.1	24.7
570	380		10.2	11.2	12.7	14.7	16.8	17.8	19.3	20.3	21.3	23.9	28.5	
1435	955	7.0	---	7.1	8.1	9.6	11.6	13.6	14.6	16.1	17.1	18.1	20.6	25.7
520	345		9.6	10.7	12.2	14.3	16.3	17.3	18.8	19.8	20.8	23.3	28.5	
1225	815	8.2	---	---	---	8.6	10.8	12.6	13.6	15.2	16.2	17.2	19.6	24.7
445	295		11.2	13.2	15.2	16.2	17.8	18.8	19.8	22.3	27.5			
1115	740	9.0	---	---	---	---	9.8	11.9	12.9	14.4	15.4	16.4	19.0	24.1
405	270		12.4	14.5	15.5	17.1	18.1	19.1	21.6	26.9				
950	630	10.6	---	---	---	---	---	10.5	11.5	13.1	14.4	15.1	17.6	22.8
345	230		13.0	14.0	15.6	16.6	17.6	20.2	25.4					
840	555	12.0	---	---	---	---	---	---	10.2	11.7	12.8	13.8	16.4	21.6
305	200		12.6	14.2	15.2	16.3	18.9	24.2						
670	445	15.0	---	---	---	---	---	---	---	---	---	---	13.5	18.9
245	160		15.9	21.5										

Size 870 Junior Pulley

1 HP @ 1750 RPM
 Driven Sheave: FHP or Dual-Duty
 Belt: 5L FHP, B or BX S-L Classic

Driven RPM's Max/Min		Driven Sheave P.D.	Min/Max Center Distance for V-Belt No.											
Motor RPM			B-38	B-42	B-46	B-48	B-51	B-53	B-55	B-60	B-68	B-75	B-81	B-90
1750	1160													
1565	1040	7.4	8.9	10.9	12.9	13.9	15.4	16.4	17.4	19.9	23.9	27.4	30.4	32.4
630	415		11.8	13.8	15.8	16.8	18.4	19.4	20.4	22.9	26.9	30.4	33.4	35.4
1345	895	8.6	---	9.9	11.9	12.9	14.4	15.4	16.4	18.9	22.6	26.1	29.2	33.6
540	360		12.7	14.7	15.8	17.3	18.3	19.3	21.6	25.4	29.0	32.1	36.5	
1230	820	9.4	---	9.2	11.2	12.2	13.8	14.8	15.8	18.3	22.3	25.8	28.8	33.3
490	325		11.9	14.0	15.0	16.6	17.6	18.6	21.2	25.2	28.7	31.7	36.2	
1055	700	11.0	---	---	9.8	10.9	12.4	13.4	14.4	16.9	20.8	24.3	27.3	31.9
420	280		12.5	13.5	15.1	16.2	17.2	19.7	23.0	27.1	30.1	34.7		
935	620	12.4	---	---	---	---	11.0	12.1	13.1	15.7	19.5	23.1	26.1	30.6
375	250		13.7	14.8	15.8	18.4	22.4	26.0	29.0	33.5				
775	500	15.4	---	---	---	---	---	---	---	12.8	16.8	20.4	23.5	28.1
300	200		15.4	19.4	23.2	26.3	31.9							
625	416	18.4	---	---	---	---	---	---	---	---	---	17.7	20.8	25.5
242	164		20.5	23.6	28.3									

REEVES Junior & Senior Pulleys

Size 875 Junior Pulley

1-1/2 HP @ 1750 RPM
 Driven Sheave: FHP or Dual-Duty
 Belt: 5L FHP, B or BX S-L Classic

Driven RPM's Max/Min		Driven Sheave P.D.	Min/Max Center Distance for V-Belt No.											
Motor RPM			B-38	B-42	B-46	B-48	B-51	B-53	B-55	B-60	B-68	B-75	B-81	B-90
1750	1160													
1685	1120	7.4	8.5	10.5	12.5	13.5	15.0	16.0	17.0	19.5	23.3	26.8	29.8	34.3
675	445		11.6	13.7	15.7	16.7	18.2	19.2	20.0	22.7	26.5	30.0	33.0	37.5
1450	965	8.6	---	9.5	11.5	12.5	14.0	15.0	16.0	18.5	22.3	25.8	28.8	33.3
580	385		12.6	14.6	15.6	17.2	18.2	19.2	21.7	25.5	29.0	32.0	36.2	
1330	880	9.4	---	8.8	10.9	11.9	13.4	14.4	15.4	17.9	21.7	25.2	28.2	32.7
530	335		11.8	13.9	14.9	16.5	17.5	18.5	21.0	24.9	28.4	31.3	35.8	
1135	750	11.0	---	---	---	10.5	12.0	13.0	14.0	16.6	20.4	23.9	26.9	31.4
455	300		13.4	14.9	16.0	17.0	19.6	23.4	26.9	29.9	34.4			
1000	670	12.4	---	---	---	---	10.7	11.8	12.8	15.3	19.2	22.7	25.7	30.3
400	265		13.6	14.6	15.7	18.3	22.2	25.7	28.7	33.3				
810	540	15.4	---	---	---	---	---	---	---	12.5	16.5	20.1	23.2	27.7
325	215		15.3	19.2	22.9	26.1	30.6							
680	450	18.4	---	---	---	---	---	---	---	---	---	17.3	20.4	25.0
273	181		20.2	23.3	28.0									

REEVES Senior Pulley

Size 5675 Senior Pulley

1/4 - 3/4 HP @ 1750 RPM
 Driven Sheave: 2.5" Wide Flat Face Pulley

Driven RPM's Max/Min		F-F Pulley Dia	Belt Part Number/ Length						
Motor RPM			109409	109011	109012	109013	109014	109422	109426
1750	1160		300	360	420	480	540	600	660
1680	1119	5	6.6	9.6	12.6	15.6	18.6	21.6	24.6
560	373		9.2	12.3	15.3	18.3	21.3	24.3	27.3
1416	945	6	---	8.8	11.8	14.8	17.8	20.8	23.8
472	315		11.4	14.4	17.5	20.5	23.5	26.5	
1224	816	7	---	8.0	11.0	14.0	17.0	20.0	23.0
408	272		10.5	13.5	16.6	19.6	22.7	25.7	
1077	720	8	---	---	10.2	13.2	16.2	19.2	22.2
359	240		12.6	15.7	18.8	21.8	24.8		
963	642	9	---	---	9.3	12.3	15.4	18.4	21.4
321	214		11.6	14.8	17.9	20.9	23.9		
870	582	10	---	---	---	11.4	14.5	17.5	20.5
290	194		13.8	16.9	20.0	23.0			
795	528	11	---	---	---	10.5	13.6	16.6	19.6
265	176		12.8	16.0	19.1	22.1			
729	486	12	---	---	---	---	12.6	15.4	18.4
243	162		15.0	18.1	21.1				
627	420	12	---	---	---	---	10.6	13.8	16.8
209	140		12.8	16.1	19.1				

REEVES Junior & Senior Pulleys

Size 7202 Senior Pulley

1 - 2 HP @ 1750 RPM

Driven Sheave: 2.5" Wide Flat Face Pulley

Driven RPM's Max/Min		F-F Pulley Dia	Belt Part Number/ Length									
Motor RPM			109501	109020	109021	109508	109022	109023	109024	109516	109520	109523
1750	1160		363	386	426	454	484	544	604	666	726	806
		Min/Max Center Distance										
1809	1206	6*	7.5	8.5	10.5	12.0	13.5	16.5	19.5	22.5	25.5	29.5
603	402		10.9	11.9	13.9	15.4	16.9	19.9	22.9	25.9	28.9	33.0
1569	1047	7*	---	7.7	9.7	11.2	12.7	15.7	18.7	21.7	24.7	28.7
523	349		11.0	13.0	14.6	16.0	19.1	22.1	25.1	28.2	32.2	
1383	924	8	---	---	8.9	10.4	11.9	14.9	17.9	20.9	23.9	27.9
461	308		12.1	13.7	15.2	18.2	21.2	24.3	27.3	31.4		
1239	825	9	---	---	---	9.5	11.0	14.0	17.0	20.0	23.0	27.0
413	275		12.9	14.2	17.3	17.3	23.4	26.4	30.5			
1119	747	10	---	---	---	---	10.2	13.2	16.2	19.2	22.2	26.2
373	249		13.3	16.4	19.4	22.5	25.5	29.7				
1023	681	11	---	---	---	---	---	12.3	15.4	18.4	21.4	25.4
341	227		15.5	18.6	21.6	24.7	28.8					
942	627	12	---	---	---	---	---	11.4	14.5	17.5	20.5	24.5
314	209		14.5	17.6	20.7	23.8	27.9					
810	540	14	---	---	---	---	---	---	12.6	15.7	18.8	22.9
270	180		15.6	18.8	21.9	26.1						
714	474	16	---	---	---	---	---	---	13.8	16.9	21.0	
238	158		16.7	20.0	24.2							
636	423	18	---	---	---	---	---	---	---	---	14.9	19.2
212	141		17.8	22.2								
573	384	20	---	---	---	---	---	---	---	---	---	17.1
191	128		20.0									

Size 9205 Senior Pulley

3 - 5 HP @ 1750 RPM

Driven Sheave: 3.25" Wide Flat Face Pulley

Driven RPM's Max/Min		F-F Pulley Dia	Belt Part Number/ Length											
Motor RPM			109717	109719	109721	109722	109740	109724	109726	109728	109729	109731	109732	109734
1750	1160		521	546	586	606	636	646	686	726	776	834	856	906
		Min/Max Center Distance												
1425	951	10	10.6	11.6	13.9	14.6	15.6	16.6	18.6	20.6	23.1	25.6	27.1	29.6
475	373		14.8	15.9	17.9	18.9	20.0	20.9	23.0	25.0	27.6	30.1	31.6	34.1
1305	945	11	---	10.8	12.8	13.8	14.8	15.8	17.8	19.8	22.3	24.8	26.3	28.8
425	315		14.9	17.0	18.0	19.1	20.1	22.1	24.2	26.7	29.2	30.7	33.3	
1200	816	12	---	---	11.9	12.9	14.0	15.0	17.0	19.0	21.5	24.0	25.5	28.0
400	272		16.0	17.1	18.1	19.1	21.2	23.3	25.8	28.3	29.9	32.4		
1035	720	14	---	---	---	---	12.2	13.2	15.2	17.3	19.8	22.3	23.8	26.4
345	240		16.1	17.2	19.3	21.4	24.0	26.5	28.1	30.6				
912	642	16	---	---	---	---	---	---	13.4	15.5	18.0	20.6	22.1	24.6
304	214		17.3	19.4	22.1	24.7	26.2	28.8						
813	582	18	---	---	---	---	---	---	---	---	16.1	18.7	20.3	22.9
271	194		20.0	22.7	24.3	26.9								
735	528	20	---	---	---	---	---	---	---	---	---	16.8	18.4	21.0
245	176		20.6	22.2	24.9									
669	486	22	---	---	---	---	---	---	---	---	---	---	16.3	19.0
223	162		20.0	22.8										

APG

MASTER XL

MOTO DRIVE

ULTIMA

REEVES PULLEYS

REEVES Junior & Senior Pulleys

Size 1110 Senior Pulley

7-1/2 or 10 HP @ 1750 RPM

Driven Sheave: 4.25" Wide Flat Face Pulley

Driven RPM's Max/Min		F-F Pulley Dia	Belt Part Number/ Length								
Motor RPM			109856	109862	109837	109052	109053	109845	109893	109877	
1750	1160		660	730	790	850	910	970	1030	1090	
		Min/Max Center Distance									
1443	963	12	14.1	17.1	20.1	23.1	26.1	29.1	32.1	35.1	
481	321		19.3	22.4	25.5	28.5	31.5	34.6	37.6	40.6	
1251	834	14	---	15.4	18.5	21.5	24.5	27.5	30.5	33.5	
417	278		20.5	23.6	26.7	29.8	32.8	35.9	38.9		
1104	738	16	---	---	16.7	19.8	22.8	25.8	28.8	31.9	
368	246		21.7	24.8	27.9	31.0	34.1	37.1			
990	660	18	---	---	14.9	18.0	21.0	24.1	27.1	30.2	
330	220		19.7	22.9	26.0	29.2	32.3	35.3			
897	597	20	---	---	---	16.1	19.2	22.3	25.4	28.4	
299	199		20.8	24.0	27.2	30.4	33.5				
819	546	22	---	---	---	---	17.2	20.4	23.5	26.6	
273	182		21.9	25.2	28.4	31.5					
753	501	24	---	---	---	---	---	18.4	21.6	24.7	
251	167		23.0	26.3	29.5						
696	465	26	---	---	---	---	---	---	19.5	22.7	
232	155		24.0	27.4							
648	432	28	---	---	---	---	---	---	---	20.6	
216	144		25.1								

Size 912-15 Senior Pulley

15 HP @ 1750 RPM

Driven Sheave: 4.25" Wide Flat Face Pulley

Driven RPM's Max/Min		F-F Pulley Dia	Belt Part Number/ Length				
Motor RPM			109052	109053	109845	109893	109877
1750	1160		850	910	970	1030	1090
		Min/Max Center Distance					
1065	705	18	18.1	21.1	24.1	27.2	30.2
532	352		22.1	25.2	28.3	31.3	34.6
960	645	20	16.2	19.3	22.4	25.4	28.5
480	322		20.0	23.2	26.4	29.5	32.8
885	585	22	---	17.4	20.5	23.6	24.8
442	292		21.1	24.4	27.5	29.0	
810	540	24	---	---	18.5	21.7	24.8
405	270		22.3	25.5	29.0		
750	495	26	---	---	---	16.5	23.9
375	247		23.4	27.0			

APG

MASTER XL

MOTO DRIVE

ULTIMA

REEVES PULLEYS

APG

MASTER XL

MOTO DRIVE

ULTIMA

REEVES PULLEYS